



YINSHAN
Grade 32.5



SHENG DE HAN
Grade 42.5



SHENG DE HAN
Grade 52.5



Offer all types of white cement
 White cement clinker, 32.5/42.5/52.5 white cement

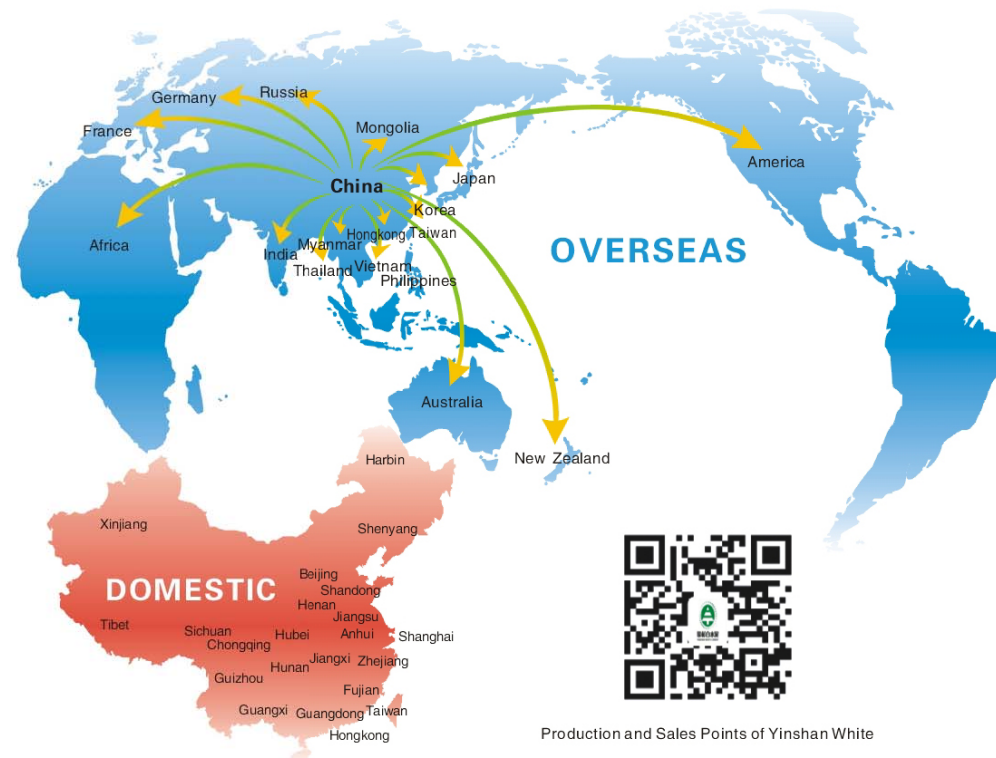
公司简介

Company profile

Jiangxi Yinshan White Cement Co., Ltd. is a major manufacturer of white portland cement in China. Yinshan was established in 2013 and soon grew up to the largest white cement plant in China with annual output 800,000 tons. Equipping with a modern new dry white cement production line and advanced homogenizing system, Yinshan provides and is known for, its consistent high quality white cement.

As the only one native brand that able to produce P.W 52.5 white cement, Yinshan could offer all types of white cement, including P.W grade 52.5, P.W grade 42.5, P.W grade 32.5 white cement and its clinker. Its good performance of high whiteness, high strength, excellent fineness and low alkalinity, soon brings Yinshan high reputation in the line and was selected as the only native brand supplier for DAVCO, NIPPON, SAINT-GOBAIN, MAPEI etc world-famous company.

With its quality conforms to standard EN197 and ASTM C150, Yinshan has broaden its market to all over the world, like USA, Japan, Korea, Australia, New Zealand, Philippines, Russia, Myanmar, Thailand, Peru etc., and were highly approved by them.



Products and specifications



SHENG DE HAN
Grade 52.5



WHITE CEMENT 52.5 GRADE
(CEM I / 52.5N)

Key Technical Indexes

Index Name	Internal Control Index		GB/T2015-2005 Standards	
	3 days	28 days	3 days	28 days
Intensity	3 days	28 days	3 days	28 days
Flexural strength, Mpa	7.0	10.0	4.0	7.0
Compressive strength, Mpa	40.0	60.0	22.0	52.5
Fineness 80um, %	≤ 0.2 (specific area 420m ² /kg)		Maximum 10%	
Initial setting time	150 minutes		No earlier than 45 minutes	
Final setting time	180 minutes		No later than 10 hours	
Whiteness (Hunter Value)	≥ 90		Minimum 87	



SHENG DE HAN
Grade 42.5



WHITE CEMENT 42.5 GRADE
(CEM II / 42.5N)

Key Technical Indexes

Index Name	Internal Control Index		GB/T2015-2005 Standards	
	3 days	28 days	3 days	28 days
Intensity	3 days	28 days	3 days	28 days
Flexural strength, Mpa	5.0	7.5	3.5	6.5
Compressive strength, Mpa	28.0	46.0	17.0	42.5
Fineness 80um, %	≤ 0.4%		Maximum 10%	
Initial setting time	180 minutes		No earlier than 45 minutes	
Final setting time	220 minutes		No later than 10 hours	
Whiteness	≥ 90		Minimum 87	



YINSHAN
Grade 32.5



WHITE CEMENT 32.5 GRADE

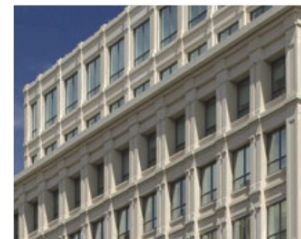
Key Technical Indexes

Index Name	Internal Control Index		GB/T2015-2005 Standards	
	3 days	28 days	3 days	28 days
Intensity	3 days	28 days	3 days	28 days
Flexural strength, Mpa	4.5	7.2	3.0	6.0
Compressive strength, Mpa	24.0	38.0	12.0	32.5
Fineness 80um, %	≤ 0.4%		Maximum 10%	
Initial setting time	200 minutes		No earlier than 45 minutes	
Final setting time	240 minutes		No later than 10 hours	
Whiteness	≥ 89.0		Minimum 87	

Package: 40 kg and 50kg PP bag, 1 ton and 1.2 tons of jumbo bag. Pallets are available.
Storage: The product should be in dry, shady and well-ventilated area. Indoor storage is recommended, Moisture-proof work should be done well. The product can be stored for 3 months at most.

Applications

Yinshan White Cement can be used for all types of architectural or structural concrete construction where a whiter or brighter color may be needed for aesthetic or safety reasons. Such application as pre-cast panels and systems, cast-in-place, masonry units, tilt-up panel systems, roofing tiles, terrazzo floors, highway median barriers, tile grout, swimming pools, stucco, culture stone, colored masonry products, cement paints and coatings, and ornamental precast concrete items.



Architectural Precast



Architectural Concrete Masonry Units



Ready Mix



Tilt-up panel system / GRC panel



Roofing tiles



Culture stone



Terrazzo floors



Tile Grout & Mortars



Swimming Pools



Wall putty



Pavers



White Cement can be pigmented in a variety of colors to accent or complement your project

Tinting

Our Projects

Yinshan white cement is assigned the only white cement supplier in many famous projects. Such as Main Center of Nanjing Youth Olympic Games and Shanghai Disneyland



● Main Center Of Nanjing Youth Olympic Games (Apply Yinshan White Cement)



● Disneyland Of Shanghai (Apply Yinshan White Cement)

Our Exhibitions

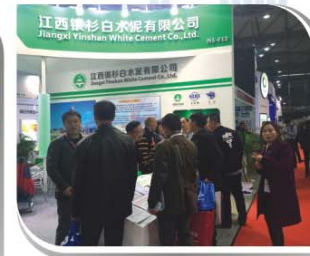
Yinshan White Cement has attended many first-class fairs in domestic and worldwide, like MOSBUILT in Russia, WORLDBEX in Phillipine, Mortar Exhibition in Shanghai etc. Thus we could get the first information of this line and also it is a way to keep tight contact with our customers, we could fast respond to their requirements and questions by Face-to-Face communication.



MOSBUILT IN RUSSIA



WORLDBEX IN PHILLIPPINE



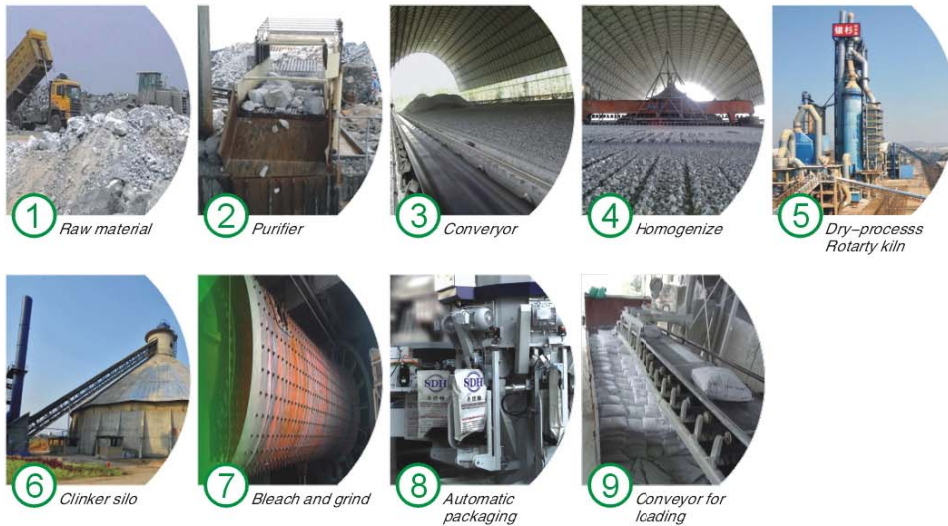
MORTAR EXHIBITION IN SHANGHAI

Our Production

1. Production process

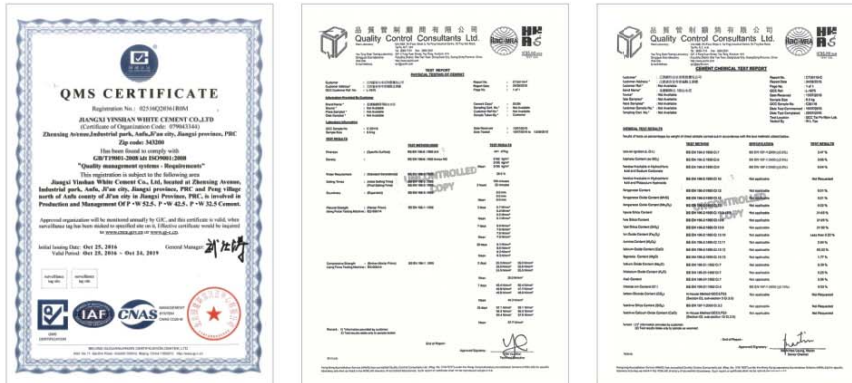
Supplied with the top quality raw materials of white cement.
Armed with the highest-level equipments and production system.
Possessing 6 National patented technology for white cement production.
Yinshan aims to provide the perfect and stable white cement to our customers worldwide.

PRODUCTION PROCESS



2. ISO 9000 Quality management system

Yinshan White Cement faithfully implement the ISO9000 quality certification system from raw materials to the manufacturing process and final leave of factory to ensure product quality.



Our Shipment

1. Logistic guidance

Automatic packaging line and conveyor for loading.
Cover the bottom of truck and container with waterproof film to prevent water.



Cover the truck with a waterproof film



Automatic belt loading

Truck



Cover the container with a waterproof film



Cover the goods with films and then tarpaulin

Container



Cover the goods with films before close the door



2. Loading examples



Jumbo bag



Dual set of bag



40/50kg bag



With pallets

Enterprise Features



Powerful management team;
Possessing the top-quality raw materials of white cement in domestic;
Possessing internationally advanced technology for white cement manufacturing;
Possessing a large-scale and modern dry white cement production line with waste heat power generation.



Water washing system for raw material



Advanced homogenizing system



Master control room



Quality control and R&D Center



Germany packing equipment

Sustainable Development

Yinshan White Cement attaches importance to energy saving and consumption reducing during the process of white cement manufacturing as well as its influence on working conditions and surrounding environment. Yinshan has managed to establish a perfect system for environmental protection and energy conservation to ensure a sustainable development.

Advanced White Cement Manufacturing Technique

Yinshan White Cement is possessed with the most advanced white cement manufacturing technique, which enables its products to reach the supreme standard internationally.

Incessant Research and Development

With regard to the performance and usage of white cement, Yinshan White Cement lays emphasis on the requirements of users specially. This company is engaged in the unceasing research and development of white cement, and spares no effort to improve its quality and performance.

Quality Management and ISO Standard Quality Management System

Yinshan White Cement faithfully implement the ISO9000 quality certification system from raw materials to the manufacturing process and final leave of factory to ensure product quality.



Transportation

Located at North Industrial Park, Anfu County, Jiangxi Province, this company is possessed with favorable geography conditions and convenient transportation;

Highway: Abut in G45 Daguang express way and only 40Km to Anfu exit of Daguang express way; interflow between Anfu section 40 Km from north to south and Shanghai-Kunming expressway and Gan-Yue expressway has been realized; it takes no more than 8 hours to reach such provinces as Jiangsu, Zhejiang, Shanghai, Fujian, Anhui, Guangdong, Hunan and Hubei; 60 Km to Jinggangshan Airport and Mingyueshang Airport;

Railway: 3 Km to Anfu Station on the Y-track connecting with Shanghai-Kunming railway and Beijing-Kowloon railway;

Waterway: 40 Km to Lijiang Xiajiang Wharf, 280 Km to Jiujiang Port of the Yangtze River. It can directly enter the sea through the Yangtze River.





 **江西银杉白水泥有限公司**
JIANGXI YINSHAN WHITE CEMENT CO., LTD.

Nanchang Sales Office:
Add: 103RM, Nanchang University National Science Park, NO.589
Gaoxin Road, Gaoxin T&D District, Nanchang 330096, Jiangxi, CHINA
Tel: +86 791 88511882?
Mobile/Whatsapp/Wechat/: +86 13576043305
Fax: +86 791 88511882
Email: sugar.wang@yswhitecement.com
Website: http://www.yswhitecement.com

Production Base: Factories in Anfu County, Ji'an City
Address: No. 18, Zhengxing Avenue, Industrial Park,
Anfu County, Ji'an City, Jiangxi Province
ZIP Code: 343200
Tel.: 0796-7636266
Fax: 0796-7635777



Efforts to build the first brand white cement
The perfect white cement

江西银杉白水泥有限公司
JIANGXI YINSHAN WHITE CEMENT CO., LTD.